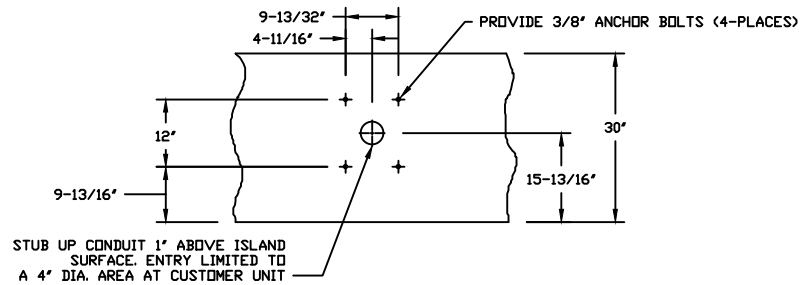
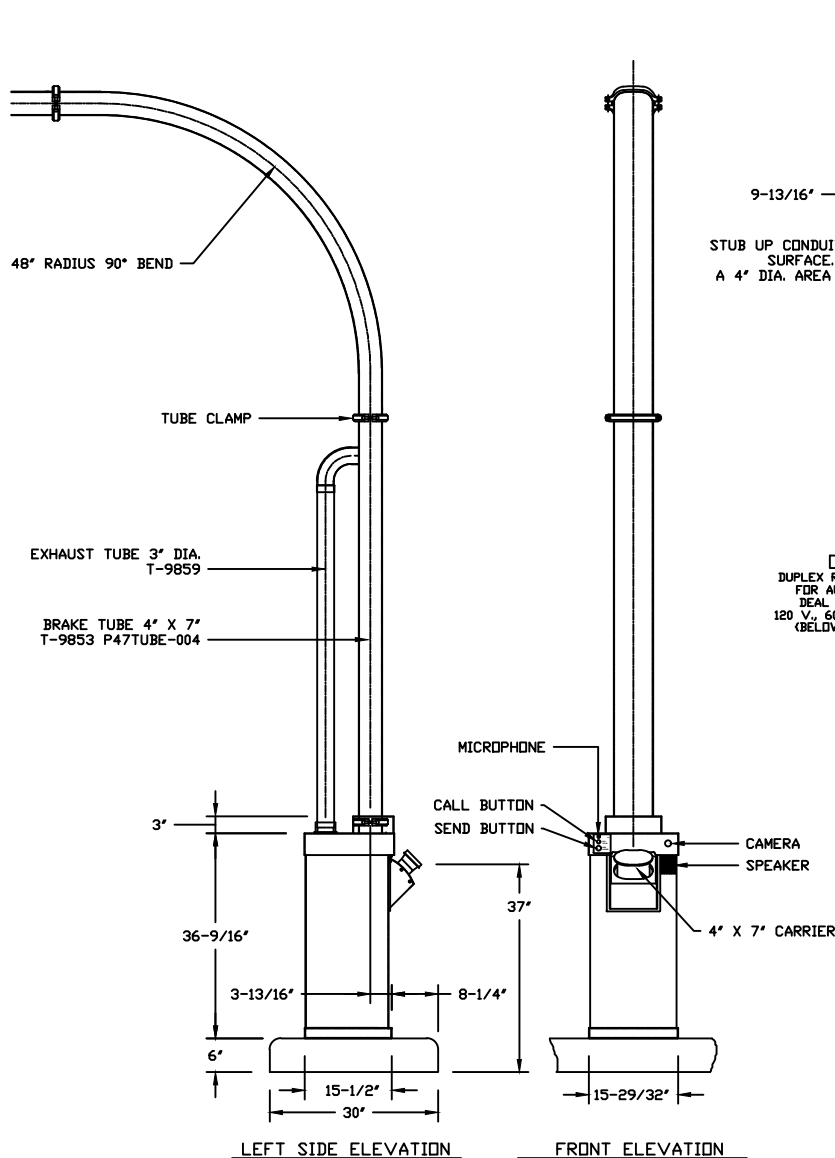
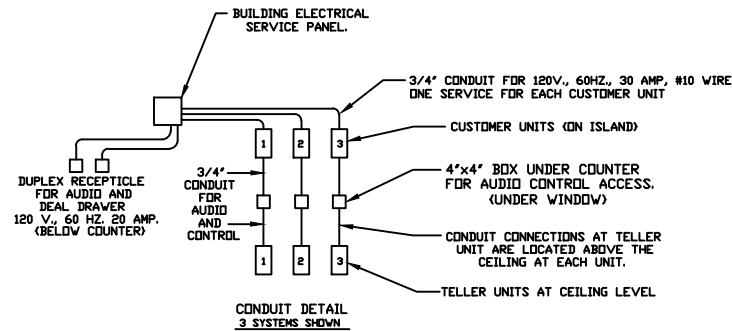


REVISION '1' 6/13/08 BD (CORRECTED TOP CLAMP COVER DETAIL)

REVISION '2' 11/21/08 BD (REMOVED 20AMP ELECTRIC FOR CONTROL UNIT, I/O CONTROL IN CUSTOMER UNIT SN #1254 AND UP)



UNDERGROUND CONDUIT ENTRY (CUSTOMER SIDE)



CONDUIT DETAIL
3 SYSTEMS SHOWN

ELECTRICAL CONTRACTOR TO PROVIDE

- ALL CONDUIT AS DETAILED
- 117 VAC SERVICE, 30 AMP SERVICE TO EACH CUSTOMER UNIT (20 AMP FULL LOAD)
- CONDUIT 'C' IS FOR LOW VOLTAGE CONTROL CABLES INSTALLED BY TUBE SUPPLIER - ELECTRICAL CONTRACTOR TO PROVIDE PULL WIRES IN EACH CONDUIT

est. 1967

HAMILTON

CUSTOM MADE SECURITY

PROPRIETARY AND CONFIDENTIAL
 THESE DRAWINGS ARE THE PROPERTY
 OF HAMILTON SAFE CO. AND SHALL
 NOT BE REPRODUCED, COPIED, USED
 AS THE BASIS FOR MANUFACTURE OR
 SALE OF APPARATUS WITHOUT
 PERMISSION

DESCRIPTION	
MODEL HA-47 UPSEND CUSTOMER UNIT	
DRAWING/MODEL NUMBER	DATE
99-852	10/08/2021